

MODELING IMS SERVICES

EMMANUEL BERTIN IMEN BEN YAHIA

*France Telecom R&D – Orange Labs, France
{emmanuel.bertin, imen.benyahia}@orange-ftgroup.com*

NOEL CRESPI

*GET-INT - Institut National des Telecommunications, France
noel.crespi@int-edu.eu*

Received March 27, 2006

Revised January 8, 2007

The IMS offers telecom operators and service providers with the architecture and the procedures to build an open IP-based service infrastructure for deployment of innovative multimedia communication services that integrate telecom and data services. IMS services should be network agnostic and user-centric. This implies a design of IMS services with reusable service enablers. This service design should rely on a common IMS service modeling to ensure interoperability and coherence in the service portfolio of service providers. The article proposes a definition of IMS services and an IMS service modeling that takes into account the user perception of the service and the technical functions carrying out the service.

Key words: IMS services, use- centric service, service enabler, service capabilities, service modeling
Communicated by: A. Hafid, P. Dini and K.H. Liu

1 Introduction

NGN (Next Generation Network) is a concept that has been introduced to take into account the new situation and changes in the telecommunications fields. This new situation is characterised by a number of aspects: the deregulation of markets, the new demand from users for innovative services to meet their needs, and the explosion of digital traffic (increase of Internet usage). The introduction of NGN comprises economical and technical aspects: economically it allows increasing productivity by creating new usage [1] based on user preferences and related to voice and data services (e.g. voice over IP, Instant messaging, Presence, Streaming and push to talk). It also permits reducing costs for infrastructure maintenance, with only one type of transport network instead of specific ones for each access network. Technically NGN makes the network architecture flexible in order to define and introduce new services easily.

The cornerstone of the service architecture for Next Generation Networks is the IMS (IP Multimedia Subsystem) architecture, standardized by 3GPP (3rd Generation Partnership Project). The IMS offers telecom operators the possibility to build an open IP-based service infrastructure that will enable easy deployment of new rich multimedia communication services mixing telecom and data services.

The conception of IMS services is a key challenge for the telecom market. IMS services are fundamentally tailored to user preferences, rely seamlessly on multiple access networks and bundle

multiple service features (e.g. voice/video connectivity, community tools, presence, conferencing, gaming and TV broadcasting).

The technical aspects of the IMS architecture are well addressed by the standardization bodies. A shared model to identify the services and their dependencies is however missing. This model will enable at least:

- ▶ Sharing a common understanding of IMS services between the stakeholders around the IMS value chain
- ▶ Resolving conflicts between services (e.g. for service composition and service interaction).
- ▶ Managing the services by providing and supervising all elements in a coherent way for the user.

The objective of this paper is to propose a service modeling linking the service as perceived by an IMS user, the service building blocks and the IMS technical function used. The following section presents a survey of IMS services: starting by briefly introducing NGN architecture, then describing IMS service architecture and the OMA (Open Mobile Alliance) achievements. Sections 3 and 4 present our proposal for IMS service modeling. Section 5 illustrates our model by applying it to the IMS Push-to-talk over Cellular service (PoC), specified by the OMA.

This work has been carried out within the collaborative project MySIP. This project focuses on IT-IMS convergence for the next-generation SIP-Based multimedia services. It covers both IMS and emergent paradigms in fixed and mobile networks such as Peer-to-Peer. Partners include Institut National des Telecommunications, France Telecom R&D, Institute for Infocomm Research, Asian Institute of Technology, Prince of Songkla University and National Chiao Tung University.

2 Achievements for IMS services

2.1 From IN to NGN

The concept of Intelligent Networks (IN) developed in the 80s was a precursor of the NGN. The principle of Intelligent Networks is to separate clearly the switching functions from the service data and logic located in an external entity: the Service Control Point (SCP). A new functional entity is added to the TDM switch, the Service Switching Point (SSP) which interfaces between the service logic and the switch itself. An interface based on the Intelligent Network Application Part family (INAP) is introduced between the SSP and the SCP. The services are no longer developed in the TDM switch – as with the concept of GSM and ISDN Supplementary Services - but are implemented in the SCP. The INAP allow the SCP to control and monitor the switch through INAP.

IN introduced the concept of a Service Independent Building block (SIB) for reusable service functions. A service could thus be thought of as a composition of various SIBs. But this goal was not fully achieved because of a lack of independence with INAP (Intelligent Network Application Part) protocol, a lack of software reusability and a lack of openness by manufacturers and operators. As a consequence, Intelligent Networks deployed today rely on a monolithic architecture and service platforms do not offer flexible services. In addition, as the service logic is executed in external entities, triggering multiple services for one call requires having service interaction management mechanisms. This issue, known as Feature Interaction, is one of the more complex problems encountered in IN on

which considerable work has been done. However, this work can not be directly applied to the NGN, because of the service and architectural differences between IN and NGN.

The promise of the NGN, as defined in the late 90s, was to offset these shortcomings by moving from a vertical approach (where access, control and services are closely tied) to a horizontal approach (where each layer provides re-usable elements to other layers). Specification work is ongoing at ITU-T (as described in [2]) to formalize the separation (e.g. through standard protocols or APIs) between:

- ▶ The transport stratum that is composed of: transfer functions from various access networks (UTRAN, WLAN, xDSL) and from the core networks, control functions for these transfer functions (e.g. network attachment control or resource and admission control), the transport user profiles (e.g. to store the data linked to network attachment) and the media handling functions (e.g. for playing announcements or for transcoding).
- ▶ The service stratum that is composed of access-independent service control functions (e.g. session establishment control or service triggering control), application functions and service user profiles. Application functions should be independent from the service control functions and should offer flexibility (e.g. by using open software mechanisms) to answer user needs

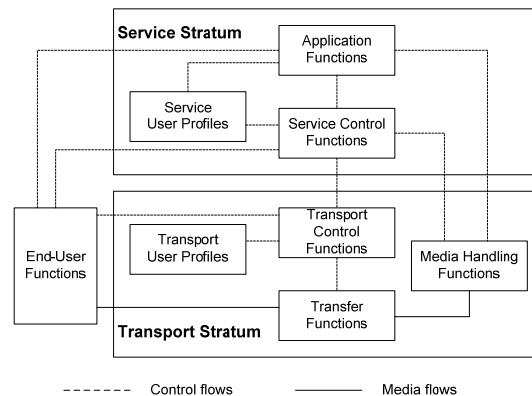


Figure 1. NGN technical architecture [2]

This NGN architecture with 2 strata is defined at the ITU-T (figure 1). The NGN architecture may also be represented with 3 layers instead of 2 strata (this is for instance the case at ETSI). In this case, service control functions and transport control functions are grouped into a control layer. The separation is thus between a transfer layer (with transfer functions), a control layer (with transport control functions and service control functions) and an application layer (with application functions).

We can draw a parallel between IN and NGN architectures, the service control function (usually implemented with a SIP-proxy) being the NGN counterpart of the TDM Switch/SSF, the application function (for example implemented with a SIP Application Server) being the NGN counterpart of the SCF. In both architectures, the triggering criteria have been defined in order to not to invoke services systematically but only when required. However, there is a key difference between those architectures regarding the triggering mechanisms. In IN the SCF controls the SSF using INAP which is independent of the call control protocols. In the NGN architectures, the application function is inserted

in the signaling path, therefore all SIP signaling requests and responses can be intercepted by the entity controlling the services. Indeed, the IN concept of “point of control”, i.e. an entity which can control the SSP and modify the signaling at any time, does not exist in the NGN context. This concept is replaced by the notion of application function present in the signaling path which can modify SIP messages to apply a service logic. The consequence of this fundamental difference in signaling and architecture is that mechanisms defined in IN for Feature Interaction are mostly not applicable for SIP.

2.2 From NGN to IMS

The IP Multimedia Subsystem (IMS) architecture is a realization of NGN principles, relying on the SIP protocol for the session control. The IMS specifications [3] define the whole multimedia session control architecture on top of the UMTS Packet-Switched domain. With IMS operators provide both reliable session control and better integrated services. As IMS is solving architectural issues for SIP deployments (as detailed in [4]), it is now seen as a guideline for all SIP deployment using the client/server paradigm. While the IETF (Internet Engineering Task Force) has standardized the SIP protocol but not the associated architectures [5], the 3GPP has defined with precision the architectures and the procedures to ensure scalability, security and reliability. Moreover, the IMS specifications are not intrinsically linked to mobile networks [6]. IMS was for the most parts conceived independently from the UMTS Packet-Switched domain and can be adapted to other types of access networks. 3GPP has specified the interface between IMS and WLAN access networks (IMS release 6) [7]. The ETSI TISPAN (Telecommunication and Internet converged Services and Protocols for Advanced Networking) project specifies the adaptations controlling xDSL access networks with IMS [8]. In addition to IMS, TISPAN is also defining other subsystems such as PSTN/ISDN emulation for PSTN replacement (which will be needed in Europe between 2006 and 2012).

The major elements related to service architecture are the following:

- ▶ S-CSCF (Serving Call State Control Functions) implement service control functions (session control and service triggering)
- ▶ HSS (Home Subscriber Server) is the central service and network database. It implements the Service user profiles (as well as the Transport user profiles)
- ▶ ASs (Application Servers) implement the application functions, providing session-related services to users. The AS offer APIs like OSA/Parlay or SIP servlet for application execution.

In order to build our IMS service model (proposed in section 4), we need to introduce the notions of user identity and of service triggering in IMS.

Concerning user identity, the user is represented in IMS by several identifiers. Public identities are routable addresses that can be communicated to the contacts of the user and can be used to reach this user (e.g. sip:emmanuel.bertin@francetelecom.com or tel:+33670566451). Private identities belong to the IMS operator and are stored in the SIM (Subscriber Identity Module) card. The same user may have several private user identities and several public user identities, but only one private identity is stored per SIM card (figure 2).

Concerning service triggering, IMS provides an application triggering architecture based on Filter Criteria and Service Points Triggers (SPT) [9]. Initial Filtering Criteria (iFC) allow the S-CSCF to

decide which service(s) shall be invoked during a SIP session or transaction and in which order they should apply. The SPT are the points in the SIP signalling on which Filter Criteria can be set. The Filter Criteria are distributed between the S-CSCF, HSS and IMS Application Server, as shown in the figure 3.

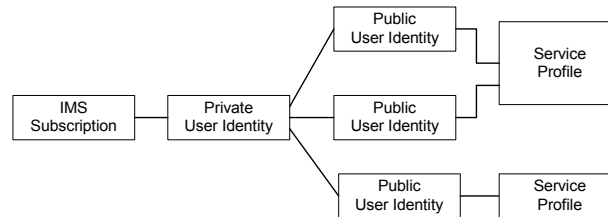


Figure 2. IMS User identities in IMS release 5 [3]

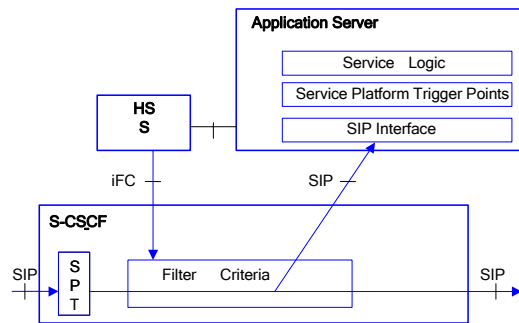


Figure 3. Application Server triggering architecture [9]

iFC are stored in the HSS as a part of the service profile. They are downloaded to the S-CSCF upon user registration, or upon a terminating initial request for an unregistered user. They are active during the registration lifetime or until the service profile is changed. Filter Criteria shall contain the following information, structured in an XML format:

- ▶ The address of the Application Server to be contacted;
- ▶ The priority of the Filter Criteria providing the sequence in which the criteria shall be applied;
- ▶ The Service Points Triggers (SPT), which may contain the following information: SIP method; presence or absence of any header; content of any header; session description information...
- ▶ Default handling if the AS is not reachable;
- ▶ Optional Service Information, added to the message body before it is sent to the AS.

During the registration phase, an S-CSCF is assigned to control user services. The service profile (containing iFCs) of the user is downloaded from the HSS to the S-CSCF. When the S-CSCF receives a SIP request matching the iFC, it invokes the associated service by forwarding this SIP request to the Application Server indicated in the iFC. iFCs are only applied to initial SIP requests i.e. the requests

initiating a SIP session or transaction (INVITE, SUBSCRIBE, REGISTER, OPTION...), consequently the service invocation can be done only statically in the SIP session or transaction initiation phase.

A user may subscribe to several services, and as a consequence several iFCs may be present in their service profile. When the S-CSCF receives an initial SIP request, it checks whether it matches the iFC that has the highest priority for this user. If it does not match, the S-CSCF checks the next iFC, in the predefined priority order. If it matches, the S-CSCF forwards the request to the indicated AS. This AS executes the service logic, eventually modifies the request, and sends it back to the S-CSCF. The S-CSCF performs the same processing with the next unexecuted iFC. The S-CSCF continues this process until all the iFCs are checked or if an AS ends the request as a part of the service logic locally, e.g. a prepaid account without remaining credit. These mechanisms will be used to build future communication services with the IMS.

3GPP had specified a SIP AS called Service Capability Interaction Manager (SCIM) for managing the interactions between application servers, but neither “the service invocation functionalities over ISC” nor “the service interaction management functionalities of SCIM” are specified in the standards [14].

2.3 IMS service capabilities and OMA enablers

The business purpose of the IMS is to enable the building of innovative services in a flexible way. IMS services will include multiple services features like chat, instant messaging, voice, video, presence, address book and TV broadcasting [10] [11]. If all these features are deployed in an uncoordinated way by a service provider, the user will have to handle the interaction between the services (e.g. by entering the same personal preferences several times). In addition, advanced services that combine many service features (like routing voice calls according to the originating community and the availability state) are not possible if there is no coordination between features. The answer to improving user experience is to build a coherent service environment by standardizing the applications functions.

Standardization of application functions is today mainly driven by ITU-T, 3GPP and OMA. Telecom and IT companies regroup within OMA to specify interoperable advanced mobility services. OMA was set up in June 2002 as a combination of the WAP forum, the SyncML Initiative, the MMS Interoperability Group, the Wireless Village Initiative, the Mobile Wireless Internet Forum and the Mobile Games Interoperability Forum. The goal of ITU-T, 3GPP and OMA is not to standardize complete services but to standardize functional service building blocks that are reusable at runtime by various services, as defined in [13]. This approach enables the building of innovative and evolving services mostly independent of network considerations. These service building blocks provide key capabilities to ensure interoperability between devices, operators and service providers. As seen before, ITU-T and 3GPP are standardizing the mechanisms which trigger these building blocks, either separately, or in a coordinated way, including the management of interactions between these capabilities, as shown in [14]. These service building blocks are called Service Capabilities at 3GPP, Service Support Capabilities at ITU-T and Service Enablers at OMA. Service Support Capabilities studied at ITU-T [15] typically include; presence, location, group management, message handling, broadcast/multicast, push and session handling or device management. Service Enablers at OMA [16] include for example data synchronization, device management, digital rights management, downloading, e-mail notification, instant messaging, presence and mobile location or multimedia

messaging. Service capabilities defined at 3GPP typically include; presence [17] and messaging [18] or conferencing [19].

The OMA specifications for service enablers are the most advanced and complete. According to the OMA, an enabler is defined as

- ▶ "A technology intended for use in the development, deployment or operation of a Service; defined in a specification, or group of specifications, published as a package by OMA." [20]
- ▶ "An enabler should specify one or more public interfaces. Examples of OMA enablers include Location or Device Management." [16]

These definitions highlight the normative character of an enabler. A component or a technology is an enabler because it has been defined as an enabler. Moreover, when individual enablers are defined independently, each enabler has to define all functions required to fulfill its requirements. This implies several issues for the Service Provider and especially the difficulty of providing user-centric services: "integration and deployment of services is complicated and expensive; high implementation efforts for applications wanting to use several capabilities; there is no common integration of the different services from the point of view of the end-user (e.g. no common group management or user profile across multiple services)." [16] An OMA enabler should thus contain only intrinsic functions which can interact with other functions from the service architecture and/or from underlying network architecture. Intrinsic functions are defined as "those functions that are essential in fulfilling the intended task of the specified enabler". "For example, the Position Calculation function is Intrinsic to Secure User Plane Location; Authentication is intrinsic to Single Sign On; Encryption is an intrinsic function of Digital Rights Management." [16]

This separation into intrinsic and non-intrinsic functions is a way of assuring that various enablers will not include the same function (e.g. authentication function in each enabler). As specified in [16], "any requirements or features that are not intrinsic to an enabler should not be specified within the enabler's specification. An enabler's specification should only specify the intrinsic functionality required to fulfill its actual function." This specification of service functions with enablers that are responsible only for their intrinsic functions enhances the ability of service providers to offer a consistent user experience (i.e. reuse of user information, service continuity...). However, the separation into intrinsic and non-intrinsic functions is not obvious but remains subjective, as recognized in [16] ("The classification of intrinsic and non-intrinsic is subjective and needs to be done on a per enabler basis"). This implies again that the definition of enablers should result from a normative process.

The OMA has specified the OMA Service Environment (OSE) [16] that provides a common architecture for the integration of enablers and service creation.

As shown in Figure 4, the OSE architecture consists of enablers that run on an execution environment, and which are accessible to applications and other enablers through a policy enforcer.

Enablers are intended for use in the development, deployment or operation of a service. They provide their intrinsic functionality through one or more public interfaces called I0 interfaces, and may use underlying network resources through I2 interfaces (such as IMS interfaces for instance) The execution environment logically encompasses various functions such as process monitoring, software life cycle management, system support (e.g. thread management, load balancing and caching),

operation, management and administration. The interface between the execution environment and enablers are called I1 interfaces. The policy enforcer provides a policy-based management mechanism to protect resources from unauthorized requests and to manage the use of these requests for instance through appropriate charging, logging and enforcement of user privacy or preferences. The policy enforcer function allows the domain owner to extract and separate their policy rules from architectural elements. This element exposes IO+P interfaces to applications and enablers, where P are additional parameters that must be provided along with a request to an enabler's IO interface, when the policies that are to be enforced require additional parameters. Applications can be located inside or outside the service delivery environment.

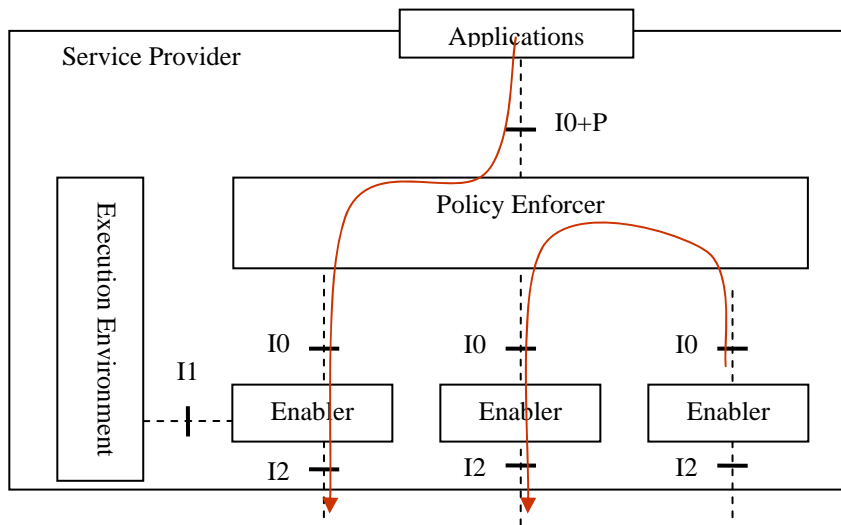


Figure 4. The OMA Service Environment architecture [16]

3. Why IMS service modeling?

Traditionally, telecommunication services are divided into bearer services, teleservices and supplementary services. "A bearer service is a type of telecommunication service that provides the capability for the transmission of signals between user-network interface" while "a teleservice is a type of service that provides the complete capability, including terminal equipment functions, for communication between users" and "supplementary service modifies or supplements a basic teleservice" [26]. Examples of basic teleservice are telephony, facsimile, or emergency calls.

These notions are still in use in some 3GPP or TISPAN standards, but can no longer be used by a service provider to design services. Indeed, the added value of IMS for service providers is the ability to build user-centric services that combine flexibly several features and enable the sharing of user information between these features to form a coherent service environment for the user [12]. As explained in section 2.3, the OMA enabler or the 3GPP service capabilities are the necessary building blocks for such services. However, a new model for IMS services, linking the services from users, enablers and technical functions, is still not defined in standards or in the academic literature.

Transfer and control functions are extensively addressed by IMS and NGN studies. Application functions are partially addressed by the OMA concerning the service delivery aspects (with the OSE). The foreseen services for IMS will require a coherent integration of multiple loosely-coupled features. The integration between these features should not only be considered at the technical level (i.e. the integration within a service delivery environment like OSE), but also at a service level (i.e. how the composition of various technical functions and enablers will provide a coherent service experience to the user). If the integration at the technical level is well addressed by the OMA and ETSI studies, the integration at the service level has not been investigated.

The goal of our work within the MySIP project is to propose a modeling of IMS services. We intend to use this model for service composition (to address the impact on the user of this composition), for feature interaction management (to address the impact on the user of interactions between services) and for service management. To answer these needs, the IMS service model should describe the relationships between a service as perceived by the user and the technical functions or enablers used to implement it.

4. Proposed IMS service model

Within the scope of the MySIP project, we aim to improve the modeling of IMS services. The modeling approach represents the requirements definition stage in order to implement IMS services in a coherent way, taking into account service architecture, service interaction and service management challenges. The modeling approach is organized as follows:

- ▶ Modeling the user perception of the service, as the user is aware that his personal information is shared between his services
- ▶ Modeling the technical functions which are the foundation of IMS. Technical functions are those carried out by the systems (e.g. service platforms, terminals...) controlled by the service providers.
- ▶ Modeling IMS service architecture based on service enablers. Service enablers are designed for the reuse of the user information between services and for an easy integration of new services. As seen before, service enablers contain and wrap technical functions (intrinsic functions). We propose to characterize an enabler by the information it handles and by the technical functions it wraps. For instance, only one service enabler can produce the presence information and can wrap the technical functions linked to presence or only one service enabler can produce the location information and can wrap the technical functions linked to location.

4.1 Services as seen by the user

The first activity is to clearly define what a service is. There is a lot of research on the notion of service, not that much in the IT area, but rather in the economic and business sciences, as surveyed in [21] In a generic way, a service can be defined as any business actions or business activities that have a value added result for a user (a person or a system). This action or activity is offered by a service provider (another person, entity or a system) which profits from providing this action. [22] [23].

In the telecommunication field, a telecom service is defined by 3GPP as "a component of the portfolio of choices offered by service providers to a user, functionality offered to a user." [24]

The focus area of this study is service usage; hence we concentrate on the user while the customer is outside the scope of our proposed service model. The customer is a person or organization that purchases products and services [25] while the user is the person (or system) that uses the service and can be different from the customer. For example, in a family, the customer may be one of the parents, and a child may be the user of the purchased service. The customer usually assigns rights to users to use the services he has obtained. The customer can be a user himself. While the user is typically a person, it may also be another actor (e.g. another service provider).

Relying on the above service definition, we propose a definition for IMS services as follow:

- Activities that take place in interactions between a user (i.e. IMS user) and systems controlled by service providers (e.g. IMS user equipment, IMS platforms). These activities have a value added result for the user; and the service providers profit from providing these activities.

In this definition we highlight two parties: the user and the systems controlled by the service providers. The purpose is to propose a modeling of the service behavior as seen by the user and a modeling of the technical system architecture (e.g. IMS user equipment, IMS service platform).

From a user perspective, the purpose of IMS services is to establish a communication session between users that is adapted to user preferences and context. The session manipulated by IMS services may be voice sessions, but can also be video sessions, instant messaging sessions or collaboration sessions. The term session here means only an interactive exchange between two or more persons in order to communicate. From a user perspective, an IMS service is linked to his identity and not to his access device, because the user may access the same services from several IMS devices.

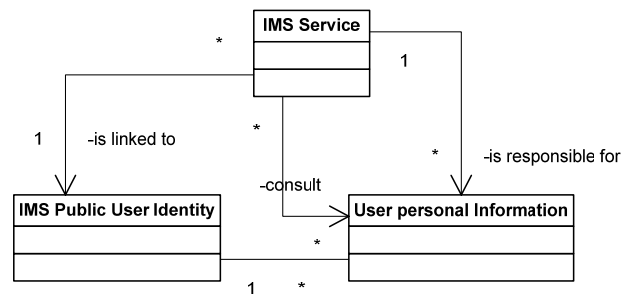


Figure 5. IMS service seen by user

When using his IMS services, the user is aware that applications, within his user equipment or within service platforms, are sharing and reusing his personal information such as his presence information, availability rules, personal profile, contact list or location information. A given service will be responsible for the creation and the modification of each type of information (e.g. presence service for presence information, location service for location information...). An IMS service can thus consult user's personal information (according to privacy policies) and may be responsible for defined user information.

Figure 5 proposes relationships between an IMS service, an IMS Public User Identity and the User's personal Information. The term of IMS service in this figure do not name a service in a general

way (e.g. Presence Service), but name the service instance of one specific user (e.g. Bob's Presence Service).

4.2. Technical functions

From a service provider technical perspective, a service is implemented with technical functions. Technical functions are the functions carried out by systems controlled by the service providers (e.g. service platforms, terminals...). As seen before, the IMS service architecture may be divided into several technical functions. The first division is between service stratum functions, transport stratum functions and end-user functions. As we are not dealing here with networking issues, we will focus only on the service stratum. As seen in section 2.1, this service stratum is divided between service control functions, service user profiles and application functions [2]. In addition, end-user functions have to be considered. They are not part of the service stratum but are closely related, for the delivery of the services through the user interface.

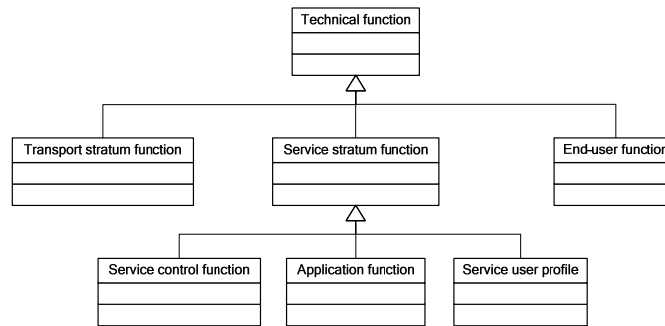


Figure 6. IMS technical functions

Figure 6 proposes a model of the IMS (or NGN) technical functions. The service stratum functions are a particular type of technical functions. A service stratum function may be:

- ▶ A service control function that handle common control functions like session establishment control or service triggering control
- ▶ An application function that contains the service logic and the manipulation rules for session establishments (e.g. transfers, callback, reachability, call log...)
- ▶ A service user profile that stores the information on user identities and on service triggering
- ▶ An end-user function that includes not only the connection to the IMS (using SIP and bearer protocols) but also the service interface part that resides in the client device. This interface performs the transformation of the technical messages from the application functions into something usable by the user (and vice versa), and provides thus the end-user with the ability to initiate and participate in a session. For example, an interface for presence will transform the presence protocols messages into a user interface displaying the presence of user's contacts.

4.3. Relationship between service and technical function

Within IMS service modeling we propose in figure 7 to link the user view of the service and the set of technical functions that carry out this service.

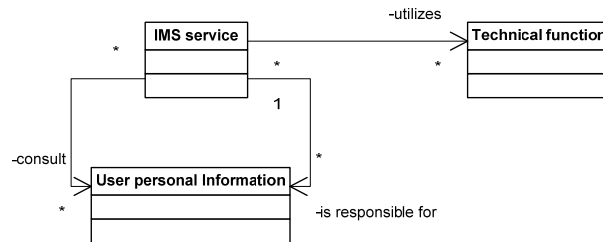


Figure 7. IMS service

To illustrate this figure 7, we can consider the example of an IMS presence service. The presence service is seen by the user as the notification of presence information between a consumer of presence information and sources of presence information, where the presence information is a set of attributes characterizing current properties of the sources (such as status or communication address) [17]. The presence service is performed with technical functions such as end-user presence clients (a presence source client and a presence watcher client), service control mechanisms to route presence messages (the SIP SUBSCRIBE, PUBLISH and NOTIFY messages) and presence application servers (to process the presence state from the presence sources and to store and to send it to the watchers that have subscribed to this presence event).

When modeling a service according to figure 7, the services are directly responsible for the user's personal information and are utilizing the technical functions directly. As seen in section 2.3, this may lead to building silo architecture, where each service relies on its own technical functions. Service enablers (or service support capabilities or service capabilities) are designed to address this issue. We have seen in section 2.3 that service enablers should focus uniquely on their intrinsic functions. According to our proposal, this means that there should be no overlap between the service enabler, both from the user perspective and from the technical functions perspective.

No overlap from the user perspective implies that different service enablers should not be responsible for the same type of user's personal information. For example, only one service enabler can produce the presence information or only one service enabler can produce the location information.

No overlap from the technical functions perspective implies that the different service enablers should not use the same IMS functions in an incoherent way. For example, only the presence service enabler can process the presence messages and store the presence state or only the location service enabler can process and aggregate user location from various location sources.

In IMS service architecture, the IMS services have to rely as much as possible on IMS service enablers. These IMS service enablers wrap a set of technical functions and provide a consistent service interface to IMS services. An IMS service might also use some technical functions directly (e.g. an application server dedicated to a specific service). In addition, only IMS service enablers should be responsible for the user's personal information.

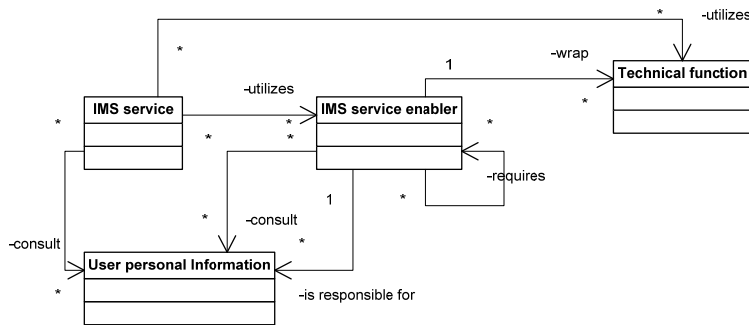


Figure 8. IMS services and service enablers

5. Example of the Push-to-talk over Cellular

In order to illustrate this model, we apply it here to the Push-to-talk over Cellular (PoC) described in the OMA release program and specifications [27]. The PoC service is a walkie-talkie-type service that allows rapid, short and spontaneous communications. It is a half duplex voice service that allows person to person and person to group communications. This service is considered as an early example of IMS application in the market. As PoC is specified as both a service and an enabler, our model will show the distinction between the service perceived by the user and the functional service building blocks.

As already explained, we demonstrate in this model the separation of concern between what is seen by the user (section 5.1), the service enabler (section 5.2) and the technical functions that implement these enablers (section 5.3). This separation will benefit service providers for the whole service life cycle especially, service composition, service interaction and service management (section 5.4).

5.1. PoC service seen from the user

From a user perspective, a typical PoC session is as follows: "The PoC user opens his contact list where presence features indicates whether contacts or groups of contacts are available or not. The user selects one or more contacts in his contact list, creates a PoC group with these contacts, starts the PoC service and then talks simultaneously to all the contacts of his PoC group."

This basic session shows that the PoC service is based on the user identity, which is necessary to access the contact list and invite other PoC users to participate in a session. Besides identity, from a user perspective, the PoC service also uses:

- ▶ Presence information, to be aware of contact availability and reachability
- ▶ Contact lists to create groups for PoC sessions
- ▶ User profiles

Figure 9 shows the PoC service as seen by user "Bob Smith". This view contains the information that the user owns and that are reused in the PoC service. His personal information could be as well reused as in another IMS service.

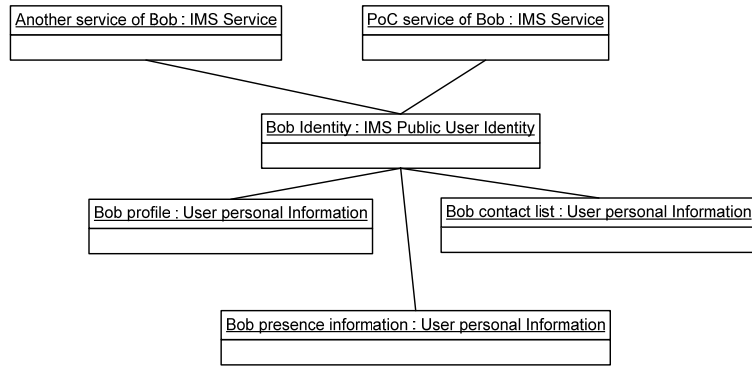


Figure 9. PoC service as seen by Bob Smith

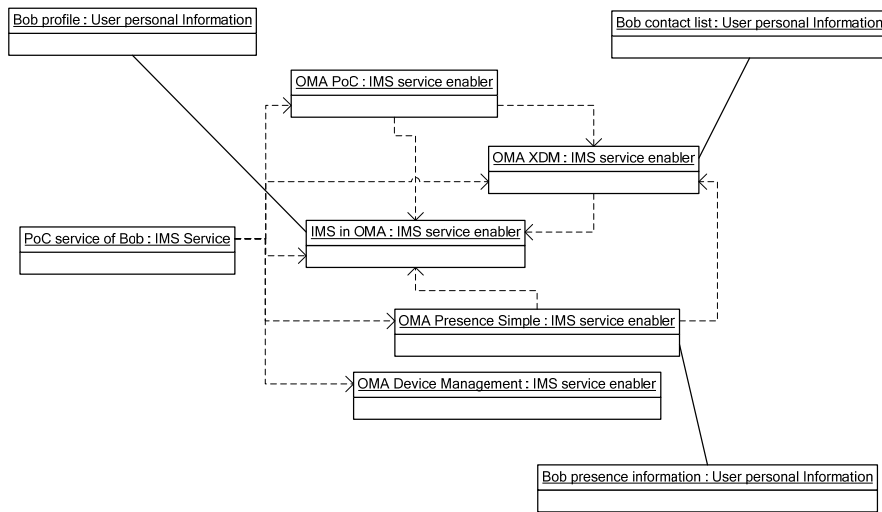


Figure 10. Service enablers for PoC service

5.2. PoC service and service enablers

As described in the OMA specifications, the PoC service requires several service enablers that perform specific actions and are responsible for specific information:

- ▶ Push-to-talk over cellular enabler [27], that manages the service logic of the PoC service
- ▶ XDM (XML Document Management) enabler [28], to handle in particular the contact groups
- ▶ Presence enabler [29]
- ▶ IMS enabler [30] to support the service
- ▶ Device management enabler [31]

The dependencies between the PoC service and the service enablers and also between the service enablers themselves are described in figure 10 with dotted arrows. Each service enabler is responsible for some type of personal information.

5.3. Technical functions for PoC service

As mentioned before, each service enabler is implemented and carried out via a set of technical functions that are shown in figure 11. In this section we split each enabler into its corresponding technical functions

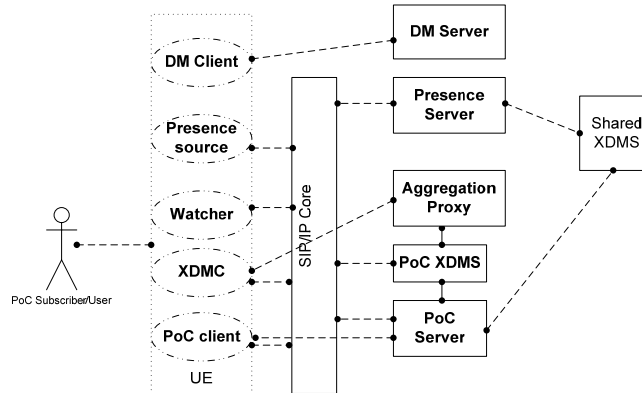


Figure 11. Technical functions of the PoC service (simplified)

The XML Document Management (XDM) enabler is implemented with a XDM client (XDMC), a shared XDM server (shared XDMS) and an Aggregation Proxy. The XDMC is an XCAP (XML configuration Access Protocol) client which gives access to XML documents stored in the network (e.g. PoC-specific documents in the PoC XDMS, Contact Lists in the Shared XDMS, etc). The Aggregation Proxy acts as the single contact point for the XDMC. It performs authentication of the XDMC, and routes individual XCAP requests to the correct XDMS. The Shared XDMS is an XCAP server that manages XML documents (e.g. Contact Lists) that are shared with other service enablers (e.g. Presence).

The PoC Enabler is implemented into a client part, a server part and a PoC specific XDM server. The PoC client resides on the terminal and is used to access the PoC service. The PoC Server implements the application logic for the PoC service. The PoC specific XDM server is an XCAP server, which manages XML documents that are specific to the PoC service (e.g. PoC groups).

The Presence Enabler is implemented on a Presence Server, a Presence Source and a Watcher. A Presence server is an entity that accepts, stores, and distributes presence information about PoC clients. A Presence Source is an entity that provides (publishes) presence information and a Watcher is an entity that is notified from presence information.

The IMS enabler includes a number of SIP proxies and SIP registrars. It performs functions such as the authentication, authorization of PoC user or maintaining of the registration state.

The Device management Enabler is implemented with a Device Management client that receives the initial parameters needed by the Service Provider for the PoC client and a Device Management server that initializes the entire configuration and updates necessary for the PoC client.

All technical functions described above belong to the service stratum. They are thus either end-user functions, service control functions or application functions. These technical functions can be modeled as described in section 4.2. PoC Client, XML Document Management Client, Presence Source, Watcher and Device Management client are End-user functions. IMS Core is a Service control

function. PoC Server, PoC XML Document Management Server, Aggregation proxy, Shared XML Document Server, Presence Server and Device Management Server are Application functions.

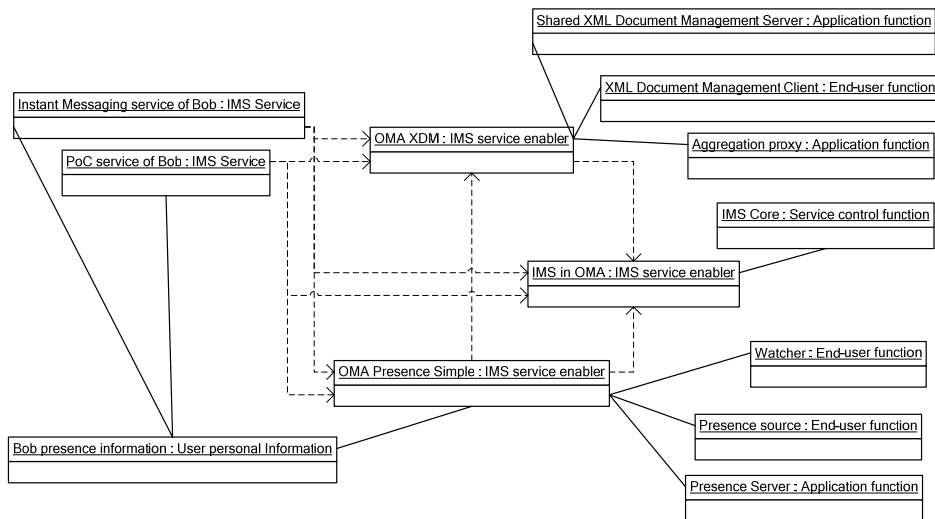


Figure 12. Relationship and dependencies between XDM, IMS and Presence Simple service enablers

5.4. Use of the IMS service model

This modeling will be used as a map to define the relationships and dependencies between services, information, service enablers and technical functions. This map will be used for:

- ▶ Service composition to detect potential incoherence and conflicts between services;
- ▶ Service interaction management to identify the consequences of the conflicts between application functions for service enablers and services;
- ▶ A Service providing process to identify all entities to be configured when a user activates a given service;
- ▶ A Service assurance process to detect the impact of an anomaly on a technical function with the service perceived by the user.

The figure 12 is an example of model for the 3 enablers: OMA XDM, IMS in OMA and OMA Presence Simple. It defines the suitable dependencies between these 3 enablers and with the service that make use of these enablers. We take here the examples of the PoC service and of an Instant Messaging service. All the enablers used by these services are not represented in order to simplify the figure.

6. Further steps

IMS services can not be considered independently from the whole service environment of the user [32]. This environment includes at least features such as identity management, community management, availability management or context management. This service environment should be able to integrate third-party service elements. The service value will reside in the quality of the

interactions between all the service elements and in seamless accessibility, in a user-centric way. A service control framework handling these interactions is therefore needed for the interactions between the operator services and for intermediation with other service providers. This framework should rely on a common modeling for services, service enablers and resources.

The main interest of the proposed approach lies in the identification of the dependencies between the services and the service enablers. This allows better design of the IMS services by defining clearly which service enabler is involved in which service, and how a service enabler is linked to technical functions. This approach optimizes the treatment of service interaction between IMS service enablers, by tracing the impact on the user perception of the service. It will also enhance service management aspects by detecting how the failure of one or many technical function can affect service enablers and the use of the IMS service. The model described in this paper will also offer solutions to identify the user personal information that should be shared between services, to define which service enabler is responsible for which information and then to design services that reuse this personal information through these service enablers.

This approach will be developed in the MySIP project. Firstly, all functions provided by the systems of IMS service providers will be defined. Relying on 3GPP and OMA specifications and on the approach defined here, we will classify all the technical functions used for IMS services. Secondly, all kind of information perceived by a user from the IMS services will be specified. The achievement of our work will be the definition of an IMS service ontology (ontology is defined as an explicit specification of a conceptualization [33]). Relying on this IMS service ontology, the semantic of the services as perceived by the user could be shared by all IMS stakeholders. This ontology will be fed back to OMA and 3GPP as part of the MySIP project.

References

1. S. Arbanowski et al., "I-centric communications: personalization, ambient awareness, and adaptability for future mobile services", *IEEE Communications Magazine*, **42** (9), 2004, pp63-69
2. K. Knightson, N. Morita and T. Towle, "NGN architecture: generic principles, functional architecture, and implementation", *IEEE Communications Magazine*, **43** (10), 2005, pp49-56
3. 3GPP, "IP Multimedia Subsystem (IMS)", TS 23.228
4. E. Bertin, E. Bury, P. Lesieur, "Operator services deployment with SIP: Wireline feedback and 3GPP perspectives", *ICIN 2003*, Bordeaux, April 2003.
5. H. Schulzrinne and J. Rosenberg, "Internet telephony: Architecture and protocols – an IETF perspective", *Computer Networks and ISDN Systems*, **31**(3), 1999, pp.237–255
6. Tang, B.Y.C., "Evolving to wireless and wireline convergence - an overview of IMS," *Wireless and Optical Communications*, 2005. 14th Annual WOCC 2005. International Conference on, no.pp. 27-, 22-23 April 2005
7. Marquez, F.G.; Rodriguez, M.G.; Valladares, T.R.; de Miguel, T.; Galindo, L.A., "Interworking of IP multimedia core networks between 3GPP and WLAN," *Wireless Communications, IEEE*, **12** (3), 2005, pp58- 65
8. Lin, F.J., "A survey on wireless/wireline integration," *Wireless and Optical Communications*, 2005. 14th Annual WOCC 2005. International Conference on, no.pp. 26-, 22-23 April 2005
9. 3GPP, "IP Multimedia session handling; IM call model", TS 23.218
10. Schilit, B.N.; Hilbert, D.M.; Trevor, J., "Context-aware communication," *Wireless Communications, IEEE*, **9** (5), 2002, pp.46- 54
11. Raento, M.; Oulasvirta, A.; Petit, R.; Toivonen, H., "ContextPhone: a prototyping platform for context-aware mobile applications," *Pervasive Computing, IEEE*, **4** (2), 2005, pp.51- 59

12. E. Bertin, E. Bury, P. Lesieur, "Next generation architectures: which roles for an incumbent operator?" Proc. Eurescom summit 2002
13. E. Bertin, E. Bury, P. Lesieur, "Intelligence distribution in next-generation networks, an architectural framework for multimedia services", IEEE International Conference on Communications, ICC 2004
14. Gouya A., Crespi N. and Bertin E. "SCIM (Service Capability Interaction Manager) Implementation Issues in IMS Service Architecture", IEEE International Conference on Communications, ICC 2006.
15. M. Carugi, B. Hirschman and A. Narita, "Intro. to the ITU-T NGN focus group release 1: target environment, services, and capabilities", IEEE Communication Magazine, **43** (10), 2005, pp 42-48
16. OMA, "OMA Service Environment" version 1.0.2, Aug. 2005
17. 3GPP, "Presence service using IP Multimedia (IM) Core Network (CN) subsystem"; TS 24.141
18. 3GPP, "Messaging using the IP Multimedia (IM) Core Network (CN) subsystem; TS 24.247
19. 3GPP, "Conferencing using the IP Multimedia (IM) Core Network (CN) subsystem", TS 24.147
20. OMA, "Dictionary for OMA specifications" version 2.1, Sept. 2004
21. I. Ben Yahia, E. Bertin, N. Crespi, J.P. Deschrevel, "Service Definition for Next Generation Networks", International Conference on Networking, ICN'06 Mauritius 2006
22. Lovelock, C., Services Marketing, People, Technology, Strategy, 4th edition, Prentice Hall, Englewood Cliffs, NJ, 2001
23. Grönroos, C., Service Management and Marketing: A Customer Relationship Management Approach, 2nd edition, John Wiley & Sons, Chichester, UK, 2000
24. 3GPP, "3GPP Definition", TR 21.905, V6.7.0, 2005
25. TMF Forum, "Shared Information and Data (SID) model", GB922 and addenda, v4.0, 2004
26. D. O. Keck and P. J. Kuehn, "Feature and Service Interaction Problem in Telecommunications Systems: A Survey", IEEE Transactions on Software Engineering, **24** (10), 1998, pp779-796
27. OMA, "OMA Push to talk over Cellular (PoC)", Candidate Version 1.0, November 2005
28. OMA, "OMA XML Document Management", Candidate Version 1.0, February 2006
29. OMA, "OMA Presence Simple", Candidate Version 1.0, February 2006
30. OMA, "IMS in OMA", Approved Version 1.0, August 2005
31. OMA, "OMA Device Management, Approved Version 1.1.2, November 2004
32. S.Ryu et al. "Research activities on next-generation mobile communications and services in Korea", IEEE Communications Magazine, **43** (9), 2005, pp122-131
33. Gruber, T. R., "A Translation Approach to Portable Ontology Specifications", 1993

Glossary

3GPP	3rd Generation Partnership Project	ITU	International Telecommunication Union
API	Application Programming Interface	NGN	Next Generation Networks
AS	Application Server	OMA	Open Mobile Alliance
CSCF	Call State Control Functions	OSE	OMA Service Environment
DSL	Digital Subscriber Line	PSTN	Public Switched Telephone Network
GSM	Global System for Mobile communications	S-CSCF	Serving Call State Control Functions
GUI	Graphical User Interface	SIB	Service Independent Building block
HSS	Home Subscriber Server	SIP	Session Initiation Protocol
IETF	Internet Engineering Task Force	SIM	Subscriber Identity Module
iFC	Initial Filter Criteria	SPT	Service Point Trigger
IMS	IP Multimedia Subsystem	TISPAN	Telecommunication and Internet converged Services and Protocols for Advanced Networking
IN	Intelligent Network	UMTS	Universal Mobile Telecommunications System
INAP	Intelligent Network Application Protocol	WLAN	Wireless Local Area Network
ISDN	Integrated Services Digital Network	XML	eXtensible Markup Language
ISUP	ISDN User Part	TMF	TeleManagement Forum
IT	Information Technology		